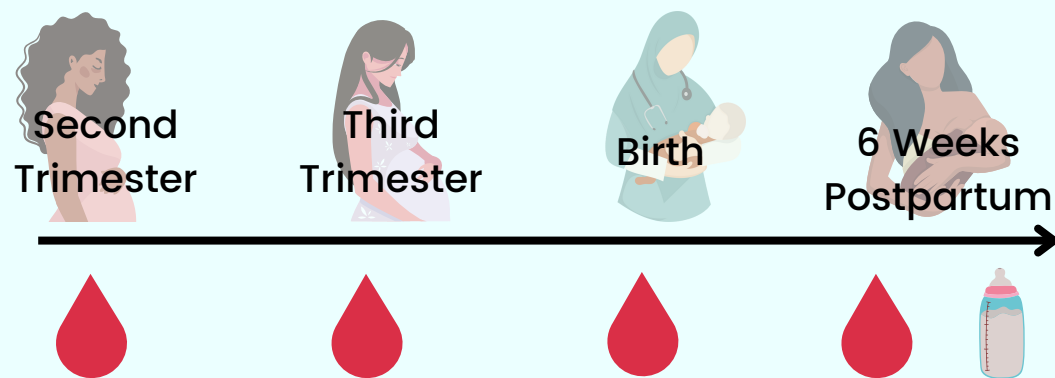


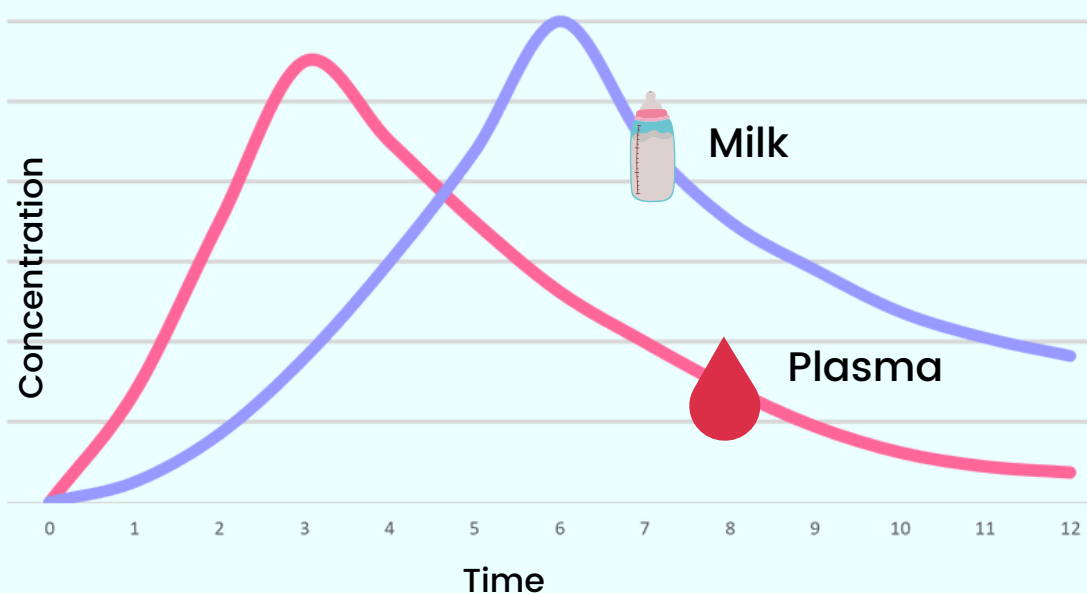
# Pharmacokinetic Modeling Approaches in Pregnancy and Lactation



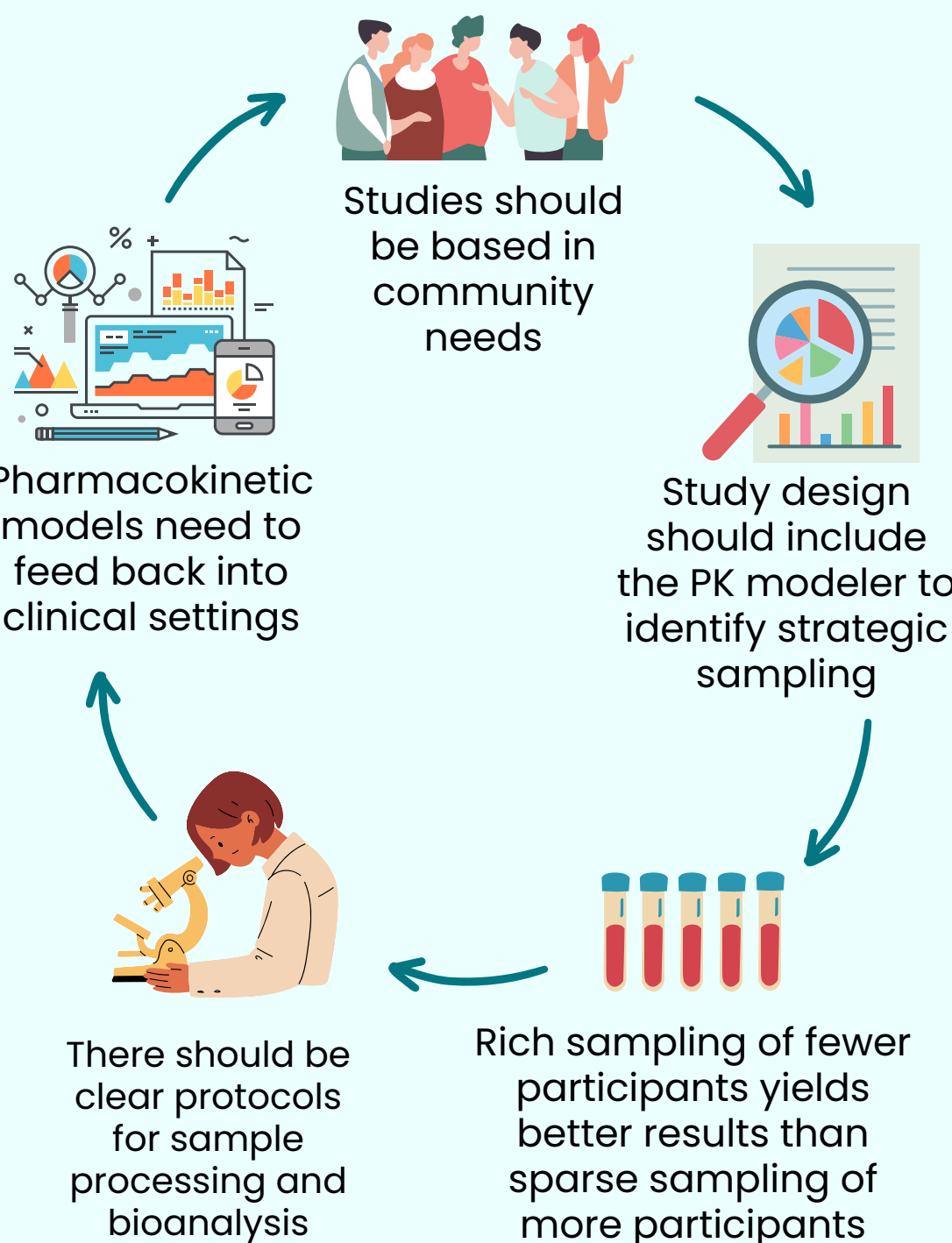
*"We owe it to participants to maximize the data coming from their samples."*



Ideal sampling for pregnancy studies should include multiple time points at stages throughout pregnancy and at birth. Postpartum samples allow the participant to serve as her own control.



Lactation studies require rich sampling, as no single data point will reflect a correct milk to plasma ratio.



Based on a presentation by Dr. Catriona Waite

From the MPRINT Virtual Workshop:

Pharmacokinetic & Pharmacodynamic Studies in the Postpartum Period

